

Muswell Hill & Fortis Green Association

Incorporating Alexandra Ward

Founded in 1948

What next for the Park and Palace?



Mark Evison, Louise Stewart and Duncan Neill

The members' meeting on 5th October was presented by Louise Stewart, Chief Executive of Alexandra Park and Palace Charitable Trust, and Mark Evison, the Park Manager. The following is a summary of the main points made at the meeting, which was well-attended and very interesting.

The current aims of the Trust are to create a welcoming visitor interface, enable people to engage with our heritage and be entertained, create opportunities to spend time inside the building, and increase revenue-generating footfall during the day, as well as the evening, throughout the year.

The footfall drivers are Events, the Ice Rink and the Park. At the moment 40% of the Palace is derelict. The Trust spends about £3.2m each year on repairing and maintaining the Park and Palace and making it accessible to the public, and it's still falling behind on repairs. The events and other activities within the Trust's Trading subsidiary generate about £1.3m in gift aid for the Trust. Haringey Council as the Corporate Trustee grant-fund about £1.9m per year, but this is reducing.

The Trust is a registered charity and everything it does is to achieve its charitable purposes. Its trading subsidiary exists to generate funds towards the upkeep of the building and the Park. The team at the Palace today are working hard to make the Park and Palace the best that it can be. We have doubled the turnover of trading activities in five years by increasing the gift aid to the trust and have attracted £26m of funding to restore the East Wing, the largest investment in the building for over 30 years. We have also achieved and maintained national quality standards for the Park. There isn't a shortage of ideas - everyone has an opinion on what we should be doing. We get lots of suggestions and approaches from groups, companies and individuals but there is a shortage of funds to make them a reality and a lack of long-term direction for what the Park and Palace need to be in the future.

A strategic Vision & Development plan/project is in the pipeline together with a Trust Strategy and long-term financial plan.

November/
December 2016

Inside this issue:

- 1 **What Next for the Park and Palace?**
- 2 **Date for your diary, Pinkham Way, Muswell Hill Creatives Christmas Market, MHFGA contacts**
- 3 **Shop fronts in Fortis Green Road, Fortismere Community Symphony Orchestra**
- 4 **New Corporate Members**
- 5 **Crouch End Festival Chorus, Shop Matters**
- 6 **Alexandra Palace Fireworks, Fortismere Fireworks**
- 7 **Local Events**
- 8 **Alex's Corner, Membership Application Form**



Statistics

2.8 million visitors per annum
Hundreds of inquiries (and complaints – about street lights, dogs, trees, and surface water)
Over 300 tonnes of litter and rubbish have been collected
Tree safety work around the Park
Grounds maintenance service renewed
Renewed leases and rent reviews
Repaired surface water sewer by the North View Road entrance
Installed new inspection chamber to make future maintenance easier
Improved park surfaces
Surface water
An unprecedented amount of rain last winter led us to Install trial 'swales' and we are awaiting the start of works to create more swales and crossings to manage water across the Park

Partnerships & Collaborations

Working effectively with Events, Learning & Participation, and Friends of Alexandra Park
Partnership work with Capel Manor College on tree work and horticulture

Awards & Accolades

Green Flag Award: 9th year
Green Heritage Award: 7th year
London in Bloom: Gold and category winner - large park

Additionally 'Go Ape' are currently building their attraction on site, we have completed phase 1 of a habitat survey for the whole Park, we are investigating new opportunities on Health and Wellbeing, and we hope to improve the evidence base of our impact and value.

Date for Your Diary

Members' Meeting

8.00pm **THURSDAY** 10 November 2016 at The Clissold Arms, Fortis Green, N2 9HR (*please note venue and that it is a Thursday, not the usual Wednesday*).

Italian Wine Tasting

Donatella Bernstein

Owner, Ethical Edibles and DrinkItaly



Ethical Edibles imports the finest of Italian natural and organic wines. Donatella is dedicated to proving that traditional methods of production can reach heights of sophistication and elegance that easily compete with, and surpass, the best technology-driven, standardised wines available on the market today. Donatella will talk about wines of note from Italy and

unusual Italian grapes, and members will have the opportunity to sample a selection of her range of red, white, sparkling and dessert wines, together with nibbles.

The Association would like to extend its warm thanks to Penelope Woolfit for her kind donation towards the cost of plants for the flower boxes, and to those members who make a donation when they renew their membership. Also thanks to Richard Streat for his kind donation at time of renewal.

A warm welcome to our newest members and corporate members: Pia Ingberg, Elizabeth Lovell and Vijay Samtani, all of Queens Avenue, and Mossy Hill and Yien Chinese Restaurant.

Please note that membership fees were due in May. If you still haven't paid, you can either fill in the form on the back page or send your cheque to the Treasurer.

PinkhamWay

A Planning Inspector's guidance on the future of Pinkham Way is expected this winter. At the end of August, the Inspector examined Haringey's Local Plan, which includes the long-term planning designation of the site. It's currently allocated for 'employment' – but this is combined with a high conservation status.

At the Inspector's examination, which was held at the Civic Centre in Wood Green, the Pinkham Way Alliance (PWA) argued that there's no evidence to support a continuation of this employment allocation. Surprisingly, given the battles of the past five years, a senior Haringey planning officer agreed that the employment status is "redundant" [sic].

However, the North London Waste Authority (NLWA), owner of the site, argued that it might still need the land for waste processing. But the intentions of a site owner are not relevant to the underlying planning status of that site. The Inspector's report will play a major part in whether or not Pinkham Way remains in danger of being used for waste.

Susie Holden

Muswell Hill Creatives Winter Market

St James's Square, Muswell Hill
Saturday 26th November - 11am-4.30pm

We're back in Muswell Hill for our Winter Market in the Square (opposite Sainsbury's).

A great place and time to start your Christmas shopping in the heart of Muswell Hill.

If you miss us in the Square, we will be having a **Christmas Pop Up** at Fringe at 108 Alexandra Park Road from **Friday 9th to Saturday 17th December** for those last-minute gifts and treats.

Visit our website www.mhfga.org for lots of information about the local area including old photos and John Hajdu's history of the Association. If you have a photo or news item why not share it with our members on Twitter @theMHFGA or visit www.twitter.com/theMHFGA. We tweet regularly on Association and local news, so please follow and spread the word. And don't forget our Facebook page!

Shop Fronts in Fortis Green Road

Recently there have been lurid new shop fronts appearing in the sedate Fortis Green Road. This has happened despite the fact that Haringey Planning Guidelines clearly state that:

1. shops should fit in with the local style and ambience
2. especially in a Conservation Area, care should be taken to keep the established character and appearance that has evolved over decades.

This has not prevented S & D Express covering large areas of their shop front with bright orange frontage with black and white lettering. Not only is the colour horrible but also the frontage goes higher than any other in the street. Above the shop, in the areas between the shop and the windows of the flats above, is a large strip of luminous plastic in the same orange. In front is an orange canopy, down in all weathers. The flashing lights around the entrance were taken down, as a sop to complaints.

Next-door is a more muted new shop but with a candyfloss pink lit strip above the shop, similar and clashing with the orange one next to it. Probably this was only installed because the orange shop got away with doing the same.

Haringey Planning Department took months to respond to complaints. Finally they decided the above was fine, on the grounds that the adjacent Dogs Trust had a yellow block of colour over its door. This is limited in dimensions and represents the colours of the charity, and is just about acceptable.

In spite of many objections and letters to the planning department and to the Chair of the Committee, Haringey seem adamant. No other shop in the road displays the vulgarity of these newcomers; they just do not fit in. It has been stated that the shopkeepers cannot be asked to ameliorate the situation, as it would be too expensive. Is this an excuse for a council to put to excuse the flagrant breaking of their own rules?

All the leaseholders in Birchwood, the Grade Two listed Arts and Crafts building right opposite the shops, have just paid £5,000, so that this beautiful building be maintained in its original character. Not only do the people who live in Birchwood Avenue benefit but the building gives pleasure to anyone passing it and it is a jewel for Muswell Hill to be proud of. We suggest the shops opposite get into line with the other retail outlets locally and the general harmonious ambience of Fortis Green Road. Currently, we are witnessing the gradual erosion of the unique character of Muswell Hill.

Rachel Boulton, Richard Boulton, Ann Jungman, Ken Sabel, Liz Thompson, Richard Heffernan, Andrew Marriott, Caroline Marriott, Moira Kan, Sarah Hardisty.

Fortis Green has Talent!

Clear your diaries and prepare to be delighted on Saturday 3rd December at 7.30 pm as the Fortismere Community Symphony Orchestra perform their winter concert.

The venue is the beautiful St Andrews Church on Alexandra Park Road N10 2DD which has amazing acoustics (also free parking in the evening). The orchestra has been going from strength to strength since it started 3 years ago and is a thriving full orchestra that has received rave reviews. Most of the members are North London locals who rush from their jobs on Tuesday to reveal their secret talents at rehearsals in Fortismere School 7-9pm.

The programme includes Sibelius's Finlandia, Prokofiev's Romeo and Juliet suite (theme from the Apprentice for those of you who like a recognisable tune), and Grieg's piano concerto in A minor.

The soloist is Mine Doğantan-Dack. A concert pianist and musicologist/music theorist, Mine Doğantan is regarded nationally and internationally as a leading figure in artistic research in music performance. Mine was born in Istanbul, Turkey. After graduating from the Istanbul Municipal Conservatory as a student of Verda Ün, and from Robert College, she received a BA in Philosophy from Boğaziçi University, Istanbul. Mine continued her music studies at the Juilliard School in New York with Oxana Yablonskaya and was awarded the Scholarship of the Turkish Ministry of Education for Young Artists. While at Juilliard she won the prestigious William Petschek award for piano performance. After receiving a BM and MM from the Juilliard School, she studied musicology first at Princeton University (MA), New Jersey and later at Columbia University, New York. She

received an MA, MPhil and PhD in music theory from Columbia University, studying with composer and music theorist Fred Lerdahl.

£10 or £8 concessions, children free.

It will be the best value quality night out, and on your door step! Refreshments including reasonably priced beverages (including alcohol), available before and in the break. The concert will end by 9.30.

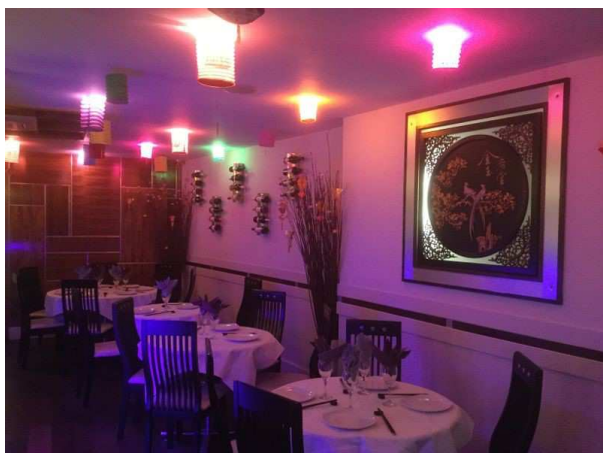
Please come along, bring friends and family. We look forward to seeing you there! If you are interested in joining then please contact conductor Thomas Gregory on thomas@thomasgregory.co.uk.



Mine Doğantan-Dack

Corporate Members' Profiles

YIEN CHINESE RESTAURANT



I am Angie Lim, the owner of Yien Chinese Restaurant in Muswell Hill which I established in 1979, 27 years ago. I worked in a Chinese Restaurant many years ago when I was a student and I was inspired and determined to have my own business. This would be an 'adventure' for me. When I first opened up, there were not many restaurants in Muswell Hill but over the past ten years a lot of cafes and restaurants have opened. I am very proud that I am the only upmarket Chinese restaurant in Muswell Hill.

I have learned over the years that customers are looking for a beautiful restaurant to eat in. Ten years ago I redesigned, renovated and refurbished Yien and I have plans for further improvements. The lighting, the seating and the shop front will change. The front doors and windows will open in warm weather and a new shop sign will go up. We will be adding Malaysian and Thai dishes to our Cantonese and Szechuan menu as customers are now requesting this, they are asking for spicier foods. My passion has not waned and I still look forward to opening up every day!

Please come and enjoy the relaxing and friendly atmosphere at Yien, you will not be disappointed!

Our Sunday Buffet is served from noon to 4.00pm. We have 20 piping hot dishes to choose from. We offer a Special Bento lunch and Dim Sum high tea daily from Monday to Saturday.

Opening times: 12:00-2:30pm and 6.00-11.30pm Monday to Saturday.

15-17 Muswell Hill Broadway Muswell Hill London N10 3HA
Telephone: 020 8444 6830

**YIENS CHINESE
RESTAURANT**

15% discount to MHFGA
members on production of
this voucher

November 2016

KNIDOS CAFÉ & BRASSERIE

We are very pleased to introduce ourselves as the creators of Knidos Café & Brasserie. We have been living in Muswell Hill for six years and are happy to have launched our business in this lovely neighbourhood.

We have been working in the restaurant and hospitality business for many years. When we met for the first time in one of the restaurants where we used to work in London seven years ago, opening our own restaurant became an our dream and then it came true!

As soon as we acquired the shop, we started to work even when it was still being decorated. We made joint decisions on every single detail. It was very very hard work, working long hours and fighting with the council to get permission to change the opening hours and sell alcohol. Finally it has become a modern café and restaurant with a warm atmosphere. At the beginning we started as a daytime café but we are now able to serve dinner too.

We both have experience in cooking Mediterranean cuisine which is fresh and light. Beril used to work in Italian, Spanish and Mediterranean restaurants as manager. She has perfected her skills in making high quality beverages just the way you want!

We are open from 8.00am to 10.30pm serving breakfast, lunch and dinner.

Arkin Erdal and Beril Isik



To the end of the year, the Everyman Cinema is offering MHFGA members a free Chambord Royale cocktail any time they visit the cinema on a Monday. Just ask for the drink and mention that it was offered by Nick Davey.

Crouch End Festival Chorus



Paul Robinson

Over thirty years have passed since Crouch End Festival Chorus was founded by David Temple and John Gregson. David, who lives in Muswell Hill, remains our Music Director and conductor as we continue to build a fine reputation in the UK and internationally.

With some 150 singers on our books, CEFC is known for its versatility and eclectic repertoire, ranging from the traditional classical works to modern and specially commissioned pieces. We perform at venues such as the Barbican and the Southbank Centre, while also celebrating our local roots with performances in Muswell Hill, Crouch End and Highgate.

CEFC's current season has a terrific mix of traditional choral works by Brahms, Prokofiev and Holst with earlier Baroque music and contemporary commissions by Vivaldi, Bach and jazz pianist, Roland Perrin. Our next concert is our ever-popular Christmas concert of carols and songs on Saturday 17 December at St Michael's Church, South Grove, Highgate, N6 6JB. This year, the concert will support Singing for Syrians, a nationwide choral initiative which is raising money for the Hands Up Foundation (www.handsupfoundation.org) which helps fund educational and medical projects in Syria.

In the New Year, we're back at the Barbican on Sunday 12 February for a performance of Prokofiev's Alexander Nevsky. J.S. Bach's St John Passion follows on Saturday 1 April at St John's Smith Square and Roland Perrin's jazz work (and a CEFC commission), dubbed Gershwin for the 21st century, is at Cadogan Hall on Saturday 1 July.

Following a stunning performance of Britten's War Requiem in 2013, CEFC will be back at the Royal Albert Hall on Remembrance Sunday for a performance of Berlioz's Messe des Morts with the BBC Symphony Chorus, London Philharmonic Choir and BBCSO.

Earlier this year, we recorded, with Chandos, Bach's St John Passion, sung in English using Neil Jenkins's sensitive translation. The soloists were Robert Murray, Evangelist; Ashley Riches, Christ; Andrew Ashwin, Pilate; Sophie Bevan, soprano; Robin Blaze, counter-tenor; Ben Hulett, tenor and Neal Davies, baritone, with the Bach Camerata and David Temple conducting.

The choir also has a hectic recording and performance schedule, which have included concerts and tours with Noel Gallagher's High Flying Birds, Hans Zimmer, Andrea Bocelli and Ennio Morricone. CEFC featured on the BBC's highly-acclaimed A Midsummer Night's Dream, with music composed by Murray Gold, and can be heard on the soundtrack of the supernatural thriller, The Awakening, featuring Dominic West and Rebecca Hall.

We rehearse every Friday evening in Muswell Hill and welcome new singers with good voices. If you are interested in coming to sing us with us, please get in touch with newmembers@cefc.org.uk. And you can find all the information you need about us as well as our concert calendar and links to our box office at www.cefc.org.uk

You can download our at-a-glance season's brochure at www.cefc.org.uk/newsandbroadcasts.aspx
We look forward to seeing you at our concerts!

Shop Matters

The former Money Shop in the northern arm of the Broadway is to become a phone repair shop. The Association was very concerned when the new owners boarded over the characteristic curved feature without seeking permission. We took it up with the Council as an enforcement case and it is very pleasing to announce that as a result the curved feature has been reinstated.

The Association also supported members in Fortis Green Road about the appearance of two shops. Unfortunately we were less successful in persuading the Council of the need to make changes in this case, but at least we tried.

I will not attempt to catalogue all the recent changes in the Broadway but there is one item of note which, unusually, concerns the interior. The former Supersaver supermarket on the roundabout has become a Real Greek restaurant. The extensive refitting works carried out revealed some original tiles and these have been brought back into use. And rather splendid they look too. I did wonder if the particular pattern or colour of the tiles used reflected the original use of a shop but I have not been able to find out what that was. I would imagine that tiles would just have been used in the case of shops selling food.

Any further information from members would be gratefully received as it is notable that, although the outside of our shops is well documented in postcards etc, there is not much information as to what the interior looked like. It would also be interesting to hear about any other examples of shops which used to have tiling or other decorative features on display. Who knows – they might just be still there lurking under subsequent shopfitting schemes and could be brought back into use one day.

John Crompton



The Real Greek

Colin Marr

Alexandra Palace Fireworks Festival

On 4th and 5th November, North London's premiere firework event at Alexandra Palace returns with a bigger bang than ever, now with an extra day of festivities. Ticket holders have access to a whole day of fun from early till late; featuring a giant bonfire, ice skating, fun fair, a huge street food and craft beer village and even an epic Day of the Dead parade set to be the largest London has ever seen. This is one bonfire night spectacle not to be missed. What's more, additional tickets can be purchased for the German Bier Festival as part of the Fireworks Festival. In the Palace's iconic great hall, over 5,000 revellers are expected each night where they will be treated to an Oktoberfest style experience in the huge bier keller, featuring a selection of premium German Biers served by Bavarian waitresses, plus live music and entertainment all evening.

This year the **Firework Display** is bigger and brighter than ever. From Alexandra Palace's unique panoramic viewpoint, the London skyline provides the backdrop to a huge display includes an epic laser show. Londoners looking for something unique are invited to discover a new addition to the festival line up, the **Day of the Dead Parade**. This epic spectacle will feature Lady Layton's Big Band Extravaganza, marching bands from New Orleans, an amazing 20 piece drum machine, fire dancers, Aztec Angels, giant illuminated colourful skeletons and even the puppets used in the James Bond film 'Spectre'. This will be the largest and most spectacular day of the dead parade seen in London. The **Giant Bonfire** located in the huge **Family Area** provides the perfect place for crowds to keep warm on a November evening. In this dedicated area there will also be a kid's funfair, independent food stalls, fully stocked bars including delicious mulled wine, face painting and treats for the little ones; plus a fantastic view of the fireworks. What's more, the **Street Food & Craft Beer Village** has expanded for 2016 with many of London's top vendors serving a wide range of delicious street food, craft beer, mulled wine and more.

As part of the festival, revellers can purchase an additional ticket for the now legendary **German Bier Festival** taking place over the two festival days. The finest German Bier will be served by an army of Bavarian waitresses accompanied by an oompah band and DJs from London's infamous pop purveyors Club De Fromage will be spinning classic tunes all night, with headline acts from a David Bowie tribute on Friday and a tribute to Queen on Saturday. Ally Pally's iconic **Ice Rink** will have public sessions all day, plus there will be an ice disco in the evening for festival goers to show off their moves on the ice.

Dates:

Friday 4th November: Gates 4pm, Display 9pm. Saturday 5th November: Gates 3pm, Display 8pm

Fireworks:

Early bird prices for a limited time only
 Adult: £6, 11-15yrs: £4, under 10s: FREE
 Standard price:
 Adult: £10, 11-15yrs: £7.50, under 10s: FREE
 Family ticket: £30 (2 adults, 2 children or 1 adult, 3 children)

Ice Rink:

All ages: £6.00

German Bier Festival (Over 18s only)

Early Bird: £13.00, Standard: £16.00

For more information please contact: Faye Daniels, Marketing Manager, on 020 8365 4322 or 07856 556616
 faye.daniels@alexandrapalace.com
www.fireworks.london



Fortismere 'Fireworks on the Field' – Thursday 3rd November 2016

Entrance: Twyford Avenue, London N2

Gates open from 6-9pm, fireworks at 7.30pm

Early Bird tickets £5 online at fsaevents.moofruit.com or £7 on the gate (under 5s go free).

This year's event promises to be better than ever with stunning fireworks designed and fired by Titanium Fireworks, world famous for their outstanding displays for the Mayor of London New Year's Eve parties and Hogmanay at Edinburgh Castle. But you don't need to go to Scotland to see them as this annual event will be held on the Fortismere Field with its amazing views across London. The fireworks start at around 7.30pm to allow time to enjoy the fireworks display at Coldfall Primary School which can be seen from the Fortismere Field just before the fireworks begins. Two shows for the price of one! It's child friendly too with the famous Carters Steam Fair providing some amazing rides and there'll be some delicious hot food stalls; a kids sparkler den and lashings of mulled wine, hot chocolate and Baileys on offer to add warmth to the night with much more to see and do.

We recommend wearing wet weather footwear as the field can get very muddy at this time of year and only some of the main areas will have matting.

The event is organised and run solely by Fortismere parents and carers in conjunction with the school to raise much needed school funds and build a sense of local community. It is supported by many businesses from the area and sponsored by local estate agents, Martyn Gerrard.

Donations to the FSA for the school can also be given at <https://www.justgiving.com/fortismereschool>

THE FORTISMERRE COMMUNITY ORCHESTRA

Based at Fortismere School, the FCO is made up of talented and enthusiastic members of the local community, including students, instrumental teachers, composers and highly skilled amateurs. (See page 3). Our next concert is on 3rd December. The FCO welcomes new players. If you would like to know more about joining, email the Fortismere Music Centre Manager at fmcinfo@fortismere.org.uk.

WHAT'S GOING ON AT ST JAMES CHURCH?

Community Cafe - **Tuesdays**, 11.00am-1.00pm. Free coffee, cake and conversation. Venue: through the main doors, just turn up.

Tea Time for seniors in the Muswell Hill area - **Wednesdays**: 2.30-3.30pm. Tea, sandwiches and entertainment - contact: gebrazier@gmail.com 020 8883 6453. Venue: St James Centre.

Legal Advice: Free legal advice - **Mondays & Saturdays** walk-in service from 10.00am-12 noon, venue: St James Church, contact: anything.legal@dial.pipex.com

THE FREEHOLD COMMUNITY CENTRE is managed by the Freehold Community Association, a registered charity, and is entirely self-funded and run by volunteers.

Mondays - Freehold Community Men's Shed - 10.30am-3.30pm. Showstoppers Performing Arts - 5-7pm. Yoga - 7-8pm. **Tuesdays** - Freehold Community Men's Shed - 10.30am-3.30pm. Showstoppers Performing Arts - 4.30-7pm.

Wednesdays - Pensioners Lunch Club - 12.30-2pm. Pensioners Bingo - 2-4pm. North London Woodturners - 7.30-10pm (**3rd Wednesday of month**). **Thursdays** - Open Shed - 10.30 to 3.30pm. Open Bingo - 7.30-10pm. **Fridays** - Baby Rhyme Time - 9.45-11am. **Saturdays** - Showstoppers Performing Arts - 10am to 4.30pm. Shree Depala - 7.30-10pm. **Sundays** - Yoga - 10-11am.

For more information on any of our activities please phone 07935-324-578 or email us at freehold2003@gmail.com. Freehold Community Centre, 9 Alexandra Road, Muswell Hill, N10 2EY

THE CLISSOLD ARMS, 105 Fortis Green, N2 9HR. ECO-ART for children aged 3 to 10 years with Joan Podel on the **2nd Saturday of the month** based on a different fairy tale each session. All packaging and art supplies are provided together with a packet of crisps and an issue of Chicken Magazine to take home.

10am to noon. £3 per child.

Saturday 12th November SHREK 2

Saturday 10th December FRED CLAUS (for Christmas)

A wide range of groups meet at the Clissold. Please see website for full details www.clissoldarms.co.uk

FRIENDS OF QUEEN'S WOOD

Visit our new website www.fqw.org.uk

Working parties **last Sunday of month**. 10.30-12 meet outside Café in Queen's Wood. Please bring gloves and mobile phone if available.

HORNSEY PENSIONERS ACTION GROUP

We meet to discuss local and national issues with visiting speakers on the **third Wednesday of the month**.

Coming up: Our talk on Wednesday 16th November at 1.30pm is on Democracy. Our meetings are held in the main church hall of Hornsey Parish Church, Cranley Gardens, N10 3AH. Contact Ann Anderson (020 8340 8335), Pamela Jefferys (020 8444 0732), Janet Shapiro (020 8883 9571) or www.hornseypensionersactiongroup.org.uk

MUSWELL HILL AND DISTRICT HORTICULTURAL SOCIETY

Contact Jenny Kruss (jenny_starrick@hotmail.co.uk) or 020 8442 0031.

FRIENDS OF COLD FALL WOOD AND MUSWELL HILL PLAYING FIELD

Coming up in November: a Photography Walk looking at autumn colours, a Fungus Walk and a Geology Walk. In early December families can enjoy a Tree Dressing Day.

For details and bookings go to www.coldfallwoods.co.uk/whats-on where you can also find historical information, maps and photos, tweets and comments, and news about your local wood. Thanks to Coldfall School for hosting our meetings at 7.30 pm on the **first Tuesday of each month**.

CROUCH END FESTIVAL CHORUS

Our annual Christmas celebration with a concert of traditional carols and songs will take place on Saturday 17th December, 7.30pm, at St Michael's Church, South Grove, Highgate. Conductor David Temple, Organ Peter Jaekel. Tickets £15 and £10 (standard CEFC concessions apply). Box office 0844 736 5220.

POPCHOIR MUSWELL HILL

If you love to sing, don't keep it to yourself! Popchoir is singing in Muswell Hill so come and join us on **Wednesday evenings** from 8-9.30pm at the Royal British Legion in Muswell Hill Rd. Singing everything from ABBA to Muse, Lady Gaga to Take That and Olly Murs - we're all about great songs and lots of fun. No experience, no auditions, no need to read music. Book a free taster session and see why our members go home smiling!

Website: www.popchoir.com Email: info@popchoir.com 020 8659 5464

RETIRED, OR HEADING FOR RETIREMENT?

University of the Third Age North London can help you on a whole new path of discovery, learning new skills and subjects or teaching your own special skills. *'We believe learning need never stop and should be a pleasure'*. Come along to one of their meetings, at St Paul's Church Hall, Long Lane, N3 2PU. To find out more, visit www.nlu3a.org.uk.

NORTH LONDON EPILEPSY ACTION is a support group for those with epilepsy or with an interest in epilepsy. The group meets on the **third Monday of the month** and has lectures, information and social events. For more information, contact Barbara Penney 020 8883 0010 or e-mail barbarapenney@yahoo.co.uk

MUSWELL HILL PHOTOGRAPHIC SOCIETY

The club meets every **Wednesday** at Jacksons Lane Community Centre at 7.45pm. We show and discuss our photographs, and we have guest speakers, competitions, and practical activities. Visit our website www.muswellhillphoto.org.uk, for more details. We welcome new members. If you would like to join or come along one evening as a guest, please email contact@muswellhillphoto.org.uk.

Check all times and dates with the organisers. If you have an event or activity that might be of interest to the Association's members, write to editor@mhfga.org and patriciajlott@aol.com by 14th December 2016.

Copy date for January/February edition of this Newsletter

If you would like to submit an article, letter or diary date for our next edition, please send your copy to editor@mhfga.org by Wednesday 14th December 2016.

Alex's Corner

NEW CORPORATE MEMBERSHIP FEE

The membership fee for Corporate Members has been increased to £25 per year, up 25% from the rate first introduced in 2003. Ordinary membership has been kept to £8 for the twelfth year running. At the start of the Association, in 1948, ordinary members paid 50p, equivalent today to about £18, with a concessionary rate for over 60s of 30p (£10.58 today). Those amounts were kept unchanged for 30 years until 1979, when they were increased respectively to £2 and £1. The concession for over 60s was abandoned in 2003, when the £8 membership fee was introduced. That year, the very first Affiliate (today Corporate) Member, Bus Watch, paid £20 to join the Association.

Thirty-nine local businesses and organisations support the Association. You can find the links to their websites on the Corporate page at www.mhfga.org.

1104 Architects, Barkers for Dogs, Bill's Restaurant, Clissold Arms, Creative Writing, Chriskitch, Duo-Klier, Elsa, Everyman Cinema, Excel English Language School, Feast, Flesh & Flour, Fortismere School, House of Nails, Knidos Café Brasserie, La Dinette, Mossy Hill, Muddy Boots, Muswell Hill Bowling Club, Muswell Hill Toy Library, Muswell Hill United Reformed Church, NCT Haringey, Norfolk House School, North & Ten, Planet Organic, Poppy Rose, Pret A Vivre, Rhodes Avenue Primary School, Robert Linsky Optometrist, St. James Church Muswell Hill, The John Baird, The Mossy Well, Tim Moss Furniture, Toffs of Muswell Hill, Topps Tiles Boutique, Victory Auto Services, WAVE, Woodland Tree Surgery and Yien Chinese Restaurant.

INVITING NEW COMMITTEE MEMBERS

We wish to encourage active involvement from all members of the Association and we are seeking nominations from MHFGA members to join our Committee and help with Press & PR, organising meetings and talks, planning, architecture and environment. All members of the MHFGA are eligible to join our Committee.

We are a non-political amenity society concerned with everything that contributes to the environment and quality of life in Muswell Hill, Fortis Green and Alexandra wards, including facilities, roads, buildings and open spaces. Being a Committee member is your opportunity to make sure that your views are reflected in the Association's decisions, plans and activities. You will meet new colleagues and make new friends with members who share your interests and aspirations.

If you feel you could contribute and are interested in joining the Committee, please contact John Hajdu, MHFGA Chairman, hajdu.clarion@talk21.com.
